



[www.girlscoutsla.org](http://www.girlscoutsla.org)

### IN THIS ISSUE:

Early Bird Registration April 1 - June 1
New Marina Service Center Opening Soon
Win \$5000 Cookie Order from MYfm Radio
GS Rose Parade Float Decorating Info
Camp Registration is OPEN!
Lazy Dog Cafe features Thin Mint Shake
Rose Parade Reserved Seating Available
Join Us for the Live Well Girl Summit
GS Cookie Cupcakes -- Yum!
Honor a Girl Scout with a Float Flower!
Girlltopia Update!
Mar Vista Troop 8393 Commended
Council Shop News
Girl Scout Day at Madame Tussauds

#### Girl Scouts, Volunteers & Families:

Spring is in the air and that means fresh ideas and new beginnings!

New friends at Lazy Dog Cafe and MYfm Radio are helping out with our Girl Scout Cookie program; our newest service center opens in April; Camp registration has begun, and Early Bird registration is just around the corner!

Plus, we've got new Rose Parade updates on the Girl Scouts' float decorating, parade seating, and ways to support.

Read on! Great things are in bloom!

### EARLY BIRD REGISTRATION BEGINS APRIL 1!



**Early Bird Registration for the 2011-2012 membership year begins April 1.** Register early and not only will you be ready for a new year of Girl Scouting, but you'll also be eligible for great Early Bird Registration incentives:

- **Only Early Bird registrants** can enter to win the chance to ride on the GSGLA Rose Parade float on January 2, 2012.
- **Only Early Bird registrants** will receive a 25% off admission to Girlltopia.

Ask your leader about Early Bird registration today. Early Bird registration closes June 1!

[Back to the Top ▲](#)

### WE'RE MOVING: NEW MARINA SERVICE CENTER OPENS APRIL!

**The new Marina Service Center is scheduled to open Wednesday, April 6** (barring any construction or inspection delays). This new center will replace the Santa Monica Service Center, which closes its doors on Friday, April 1. *Please note that the new center opens five days after the Santa Monica closure.*

The new service center will be located at 4551 Glencoe Avenue, Suite 140 in Marina Del Rey, CA 90292. Shop and offices hours and telephone numbers are the same. It will feature a larger, more customer friendly retail shop, a large training room, two smaller conference rooms, great visibility with building top signage, and ample parking. We look forward to our new space to better meet the needs of our membership.

[Back to the Top ▲](#)

**WIN \$5K COOKIE ORDER FROM 104.3 MYfm**



**MYfm wants to buy**  
**\$5,000 worth of cookies**  
**from one Girl Scout troop!**

**Will it be YOUR troop?**



MYfm is hungry for their favorite thing -- Girl Scout Cookies! The Los Angeles radio station wants to buy \$5000 worth of Girl Scout cookies!

Will your troop make the sale?

You can [enter to win](#) their cookie order by becoming a fan of My FM on Facebook and then nominating your Girl Scout Troop. [CLICK HERE](#) for more information.

Nominations will be accepted through Monday, March 7. Voting begins March 8 at 10 a.m.! You can vote once a day every day. Troop that has the most votes, WINS!

[Back to the Top ▲](#)

**Lights out! Participate in Earth Hour.**  
**March 26 • 8:30 pm - 9:30 pm**

[Click Here for details](#)

**GSGLA FLOAT DECORATING INFO**

If you're interested in decorating a float for the 2012 Tournament of Roses Parade and in having a memorable experience, you *must* read all the information presented on the GS Float Decorators website at [www.gsfloatdecorators.com](http://www.gsfloatdecorators.com).

Please note: Float decorating is not for everyone. Unfortunately, every year troop leaders or girls come to decorate without reading the information on the website and they are ill-prepared for the work. In addition to age requirements, float decorating requires patience, willingness to help no matter what the task, and *long* hours. If you have allergies, this may not be a good experience for you. Please review the material at [www.gsfloatdecorators.com](http://www.gsfloatdecorators.com) to determine if this is right for you.

	<i>GS Level(s)</i>	<i>When</i>
Dry decorating	Juniors, Cadettes, Seniors, Ambassadors	Prior to Dec. 25
Wet decorating	Cadettes, Seniors, Ambassadors	The week before Jan. 2

**Float Decorating Shift Registration opens September 1, 2011. You *must* register online at [www.gsfloatdecorators.com](http://www.gsfloatdecorators.com) after September 1.**

To be on the GS Float Decorators email list and be alerted of updates and information, send a request to [coyote1980@socal.rr.com](mailto:coyote1980@socal.rr.com).

There are *thousands* of Girl Scouts who want to participate and only a limited number can work on the Girl Scout float. Therefore, we have opportunities for Girl Scouts to have the experience of decorating other parade floats. Girls assigned to floats other than the Girl Scout float, are welcome to visit the Girl Scout float and take pictures during breaks.

Candy, Erin and Bob Tomanek have donated their time and talents to organize the float decorating experience. They have done this for over 18 years and will do their best to organize the float decorating. It is up to each of us to make the experience a memorable one!

[Back to the Top ▲](#)

**CAMP REGISTRATION IS OPEN**



**It's a summer to discover! GSGLA Summer Camps have the best in summer fun!**

Camp registration is now open!

Go horseback riding, swimming, canoeing, hiking and other outdoor camp adventures. Or try dancing, moon gazing,

painting, storytelling, acting, and more! Watch your mailbox for your 2011 GSGLA Camp Guide that includes property descriptions and camp details or [CLICK HERE](#) to download your copy today!

[Back to the Top ▲](#)

## THIN MINT SHAKES = COOL MINT FOR GSGLA



**What's better than a Thin Mint Shake from Lazy Dog Cafe? The fact that \$1 from the sale of each shake goes to local Girl Scouts!**

Through the entire month of March, all Lazy Dog Cafe locations are offering (for the first time) the Thin Mint Shake and donating \$1 of each shake purchase to Girl Scouts of Greater Los Angeles (from restaurants in our jurisdiction).

Created by Lazy Dog's Executive Chef, Gabriel Caliendo, the Thin Mint Shake is made up of vanilla ice cream, ice, Thin Mints, whipped cream and a fresh mint leave garnish. Enjoy this delicious creation today! Visit [www.lazydogcafe.com](http://www.lazydogcafe.com) to find a Lazy Dog Cafe location near you.

[Back to the Top ▲](#)

## ROSE PARADE GIRL SCOUTS SEATING!



**Reserve your seat now to celebrate a century of leadership at the Tournament of Roses Parade!** Join with hundreds of other Girl Scouts, volunteers, alumnae and supporters (from near and far) for a live, street-side look at the Girl Scout float on January 2, 2012\*!

Sharpe Seating has reserved a few special sections along the parade route just for those affiliated with Girl Scouts and is offering them at a *15% discount!*

**To reserve your seat(s), you must call 626-795-4171 and state that you want to sit in the Girl Scouts section!**

<b>Premium Seating</b> (near Norton Simon, TV cameras)	<b>\$76.50</b> (\$90 value)
<b>Preferred Seating</b> (near Pasadena City College)	<b>\$46.75</b> (\$55 value)
<b>Parking Pass**</b>	<b>\$30.00</b> (per vehicle)
<b>Parade Program***</b>	<b>\$8.50</b> (\$10 value)

**Seating is limited seats and tickets will go fast so make your reservations now!**

We strongly encourage you to buy a parking pass (\$30) from Sharpe Seating. You can also reserve a program at a reduced rate of \$8.50. For a parade map, parking or more information go to [www.sharpseating.com](http://www.sharpseating.com) or call (626)795-4171. **Girl Scout section tickets can only be purchased by phone.**

[Back to the Top ▲](#)

## LIVE WELL GIRL SUMMIT 2011



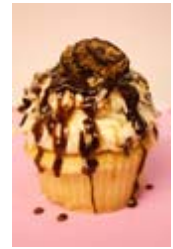
**Attention Older Girls** (Cadettes and up)! The Live Well Girl Summit is just for you! You can meet and mingle with other Older Girl Scouts and learn tips to create an even better you, while having lots of fun. Join us March 26 from 10:00 a.m. to 4:30 p.m. in Temple City. We'll have dance classes, yoga, workshops on nutrition and stress, and so much more! You will definitely want to be there! Individual workshop session details coming soon. [Click here](#) to go to the Program Calendar for more information or contact Teresa Heston-Rojas at [theston@girlscoutsla.org](mailto:theston@girlscoutsla.org).

[Back to the Top ▲](#)

## COOKIE CUPCAKES -- YUM!

**Thin Mint and Samoas cupcakes are coming to Los Angeles!** The Cake Mamas of Glendora will feature exclusive Samoas and Thin Mint cupcakes, made from an original Cake Mamas recipe, for a limited time during the month of March. The bakery will also be a new bothing site location available.

Family-owned and operated by owners Janelle Copeland and Fabiola Gomez, The Cake Mamas bakery has created over 500 original cakes and custom cupcakes and cookies since opening in April, 2009. If you are in the area, stop by their bakery (865 W. Route 66 in Unit C, Glendora, 91740) and try these Girl Scout Cookie inspired cupcakes. Visit [www.thecakemamas.com](http://www.thecakemamas.com).



[Back to the Top ▲](#)

### RIDE ON THE ROSE PARADE FLOAT - *VIRTUALLY!*

Let's have every Girl Scout ride on the Girl Scout 100th Anniversary float -- *virtually!* We can do it! For just \$5, you can purchase a flower in honor of or in memory of a Girl Scout, Troop Leader, Girl Scout Alumnae, colleague, troop, mother, daughter, friend, staff and their name will be attached to a flower vial, placed on the GSGLA float, and travel the parade route on January 2, 2012.

[CLICK HERE](#) to honor a loved one, or several, today.

[Back to the Top ▲](#)

## GSGLA offices & shops will be closed

Thursday, March 31 in observance of Cesar Chavez Day  
and April 18 for Spring Cleaning

(These dates are in addition to the regular 2nd and 4th Monday closures.)

### GIRLTOPIA - OCTOBER 29! MARK YOUR CALENDAR

What do you get when you combine Cookie Kick-Off, the Family Science Festival, villages focusing on Arts & Culture, Outdoor Adventure and Healthy Living, super special guests, awesome workshops, big performances, hundreds of cool exhibitors and thousands of girls?



Girltopia, of course! Girltopia takes place Saturday, October 29, 2011 at the Los Angeles Convention Center. Admission is just \$20\* for girls and \$15 for adults through September 30. [CLICK HERE](#) for the latest Girltopia updates!

*\*Get 25% off Girltopia admission when you Early Bird register for the 2011-2012 membership year. Ask your leader about Early Bird registration.*

[Back to the Top ▲](#)

### SAVE THESE IMPORTANT DATES

- March 26 [Earth Hour](#)
- April 1 Early Bird Registration begins
- April 1 [Girltopia Registration Opens](#)
- April 16 [Annual Meeting & Volunteer Recognition Ceremony](#)
- June 12 [Gold Award Ceremony](#)

[Back to the Top ▲](#)

### COOKIE LOCATOR AND MOBILE APP



## COOKIE LOCATOR

GSGLA's Cookie Locator tool is quite popular! It enables customers to find a Girl Scout Cookie booth near them via the GSGLA website and easily on their mobile devices -- just by typing a zip code into the locator search engine available at [www.girlscoutsLA.org](http://www.girlscoutsLA.org).

In addition, Little Brownie Bakers' Mobile App enables Smart Phone users to find Girl Scout Cookie sales, too! These are some of the many tools GSGLA provides to support our girls with a successful cookie season.

[Back to the Top ▲](#)

### GSGLA IN THE NEWS: MAR VISTA TROOP COMMENDED



**Congratulations GSGLA Troop 8395!** This great group of girls received a commendation from the Mar Vista Community Council for their work in cleaning and maintaining the Mar Vista staircase. [CLICK HERE](#) to read more about it in the MarVistaPatch Neighborhood Files.

If you've got Troop News to share, send your story and pictures to [communications@girlscoutsla.org](mailto:communications@girlscoutsla.org).

[Back to the Top ▲](#)

## BE A COOKIE HEADLINE

**Attention cookie entrepreneurs!** Tell us your cookie story and it could be featured on TV or in local newspapers! What are your plans this cookie season? What cool ways are you marketing cookies? How will you use your cookie revenue? [CLICK HERE to submit your story today!](#)

[Back to the Top ▲](#)

## COUNCIL SHOP NEWS

**There's always something new at our local GSGLA Council Shop!** Recent arrivals include the Gold, Silver and Bronze Award Gift Collection, the third Journey series materials, 100th Anniversary items, great Fun Patches for Girl Scout Week and themed for environmental awareness and service projects, and more.



New **Precious Moments Figurines** are available this month – “We Can Always Count on You” cookie-themed set (\$37.50) and the “Girl Scout Daisies Have a Sharing Heart” set (\$40).



The new Girl Scout Journey - "It's Your Story, Tell It!" is in stores now!

It's Your Story—Tell It!, the third Journey series, explores many of the same important themes found in uniquely ME! such as promoting well-being and confidence in yourself and others. [CLICK HERE](#) to preview.

These items and more can be found in the new **Spring 2011 Virtual Catalog**. Visit the GSGLA Shop page for more details: <http://www.girlscoutsla.org/pages/shop/index.html>.

**100th Anniversary Zinnia Seeds at Council Shops Now!** Renee's Garden Seeds has teamed with Girl Scouts of Greater Los Angeles to help sow the seeds of leadership. The flower seed company has created a special Garden Zinnia Mix in honor of Girl Scouts' 100th Anniversary, available at your local Council Shop now! A portion of the proceeds from the sale of these special packs will raise funds for the 2012 Girl Scout Tournament of Roses Parade Float.



All GSGLA Shops are hosting a **Clearance Sale** on a variety of apparel and select items. GSGLA Council Shop purchases support GSGLA programs. Stop by today!

[Back to the Top ▲](#)

## LET YOUR VOICE BE HEARD! WIN PRIZES!

Help us provide the best experiences for ALL of our members by participating in the new Girl Scout Voices survey. The Girl Scout Voices survey is open to Girl Scouts of all levels and all Girl Scout volunteers. The first 100 people to complete the survey will be entered into a drawing to win tickets to the Aquarium of the Pacific or Madam Tussauds Hollywood! Register today at [www.girlscoutsvoces.org](http://www.girlscoutsvoces.org)!

[Back to the Top ▲](#)

## BE COUNTED! ADD YOUR NAME TO THE GREEN DIRECTORY

You've heard of the yellow pages and the blue book -- well GSGLA has created the Green Directory. We're building a

directory of 100,000 women from all walks of life who are/were Girl Scouts (all levels, including adult volunteer!). Don't be left out! Sign your name on the roll and *please* encourage the amazing women in your life to help us reach our goal, too. [CLICK HERE](#) to add your name. *Names will not be published or promoted without permission.*



Also, be sure to check the latest updates on our 100 Anniversary Celebrations and opt in to receive the 100th Anniversary e-newsletter. Click the 100 Years button (left) for more information.

[Back to the Top ▲](#)

### GSGLA SPRING PROGRAM & ACTIVITY HIGHLIGHTS

Check out these exciting Girl Scout events and activities:

March 12	<a href="#">Girl Scout Night with the Ontario Reign</a> 7 p.m. - 10 p.m. (pre-game activities start earlier) Citizens Business Bank Arena, Ontario
March 19	<a href="#">Girls Rock! Music Workshop</a> 9 a.m. - 12:30 p.m. Los Angeles Theater Center
March 26	<a href="#">Live Well Girl Summit 2011</a> 10 a.m. - 4:30 p.m. Temple City

Check out these exciting community events and activities:

April 30	<a href="#">Girl Scout Day at Madame Tussauds</a>
----------	---

For more great Girl Scout activities, community activities, and the 2010-2011 GSGLA Program Guide, visit [www.girlscoutsla.org](http://www.girlscoutsla.org).

[Back to the Top ▲](#)

### GIRL SCOUT DAY AT MADAME TUSSAUDS



Girl Scout Day at Madame Tussauds' is Saturday April 30 at the world famous Madame Tussauds Hollywood located next door to Grauman's Chinese Theatre. Tickets are \$10.00 and include a FREE souvenir guidebook.

Experience the real glamour and elegance of Hollywood! Take your picture with our newest figure, Selena Gomez and get a discounted souvenir photo or visit our wax hand station to make your own wax hand for \$6.00 (50% off)! [CLICK HERE](#) to download the flier.

To make a reservation, contact group sales at (323)798-1681 or [groupsales@madametussaudshw.com](mailto:groupsales@madametussaudshw.com).

[Back to the Top ▲](#)

### SUPPORT THE CAMP LAKOTA REBUILD

Girl Scouts of Greater Los Angeles has retained the architecture firm of Harley, Ellis, Devereaux to rebuild the dining hall at Camp Lakota in Frazier Park. The hall burned to the ground in a January 2010 fire. With volunteer and staff input for any new amenities, the new dining hall will be upgraded to make necessary improvements to best serve Girl Scouts for years to come.

GSGLA needs your support to help cover the improvement costs; the new dining hall will be ADA accessible and energy efficient. Contact Development Director Kelly Maxwell at 626-677-2242 or [kmaxwell@girlscoutsla.org](mailto:kmaxwell@girlscoutsla.org) to find out how.

[Back to the Top ▲](#)

### SUPPORT GSGLA THROUGH EMPLOYEE GIVING

There are two ways to support Girl Scouts of Greater Los Angeles through Employee Designated Giving and Employee

Match programs.

- Employee Designated Giving allows employees to donate to charities through payroll pledges. Partnering with trusted charities United Way, Combined Federal Campaign, or any other federated campaign is a simple and easy way to support Girl Scouts. All you need to do is designate Girl Scouts of Greater Los Angeles as your charity of choice.
- Employer Match Programs are an excellent way to increase the value of your individual donation at no cost to you. Employers will often match employee donations on a one-to-one (or more) basis. Check with your employer to see if your workplace has a matching gift program.

[Back to the Top ▲](#)

## You've got it. Now share it.

Tell a friend about the GSGLA eNewsletter and forward it on.

### Girl Scouts of Greater Los Angeles

*Business Hours: Monday-Friday, 8:30 a.m. to 5:00 p.m.*

*GSGLA offices and retail shops are closed the second and fourth Mondays of the month.*

*(213) 213-0150 • [www.girlscoutsla.org](http://www.girlscoutsla.org)*

Headquarters

801 S. Grand Ave., Ste. 300  
Los Angeles, CA 90017  
(213) 213-0150

Lancaster Service Center

2330 Mall Loop Road #119  
Lancaster, CA 93536  
(661) 723-1230

Santa Monica Service Center

2525 Ocean Park Blvd.  
Santa Monica, CA 90405  
(310) 450-3720

Arcadia Service Center

101 E. Wheeler Ave.  
Arcadia, CA 91006  
(626) 677-2200

Long Beach Service Center

4040 N. Bellflower Blvd.  
Long Beach, CA 90808  
(562) 421-8456

Woodland Hills Service Center

20931 Burbank Blvd., Ste. A  
Woodland Hills, CA 91367  
(818) 886-1801

Montclair Service Center

9525 Monte Vista Ave.  
Montclair, CA 91763  
(909) 399-0808

Santa Clarita Service Center

21515 Soledad Canyon Road #118  
Santa Clarita, CA 91350  
(661) 287-1985

[Click here for a staff listing.](#)

[Back to the Top ▲](#)

Email Sponsored By:



The "Constant Contact Cares4Kids" program supports educational and social non-profit organizations that help children. Learn more about the [Cares4Kids](#) program.

More than 300,000 small businesses and organizations trust Constant Contact to connect with their customers and members. [Signup for a free 60-day trial.](#)

[Forward email](#)

✉ **SafeUnsubscribe®**

This email was sent to geer2@ca.rr.com, by [communications@girlscoutsla.org](mailto:communications@girlscoutsla.org)  
[Update Profile/Email Address](#) | Instant removal with [Safe Unsubscribe™](#) | [Privacy Policy](#).



Girl Scouts of Greater Los Angeles | 801 S. Grand Ave. Suite 300 | Los Angeles | CA | 90017